



Holywell Road, Cubert, Newquay

Offers In Region Of £465,000

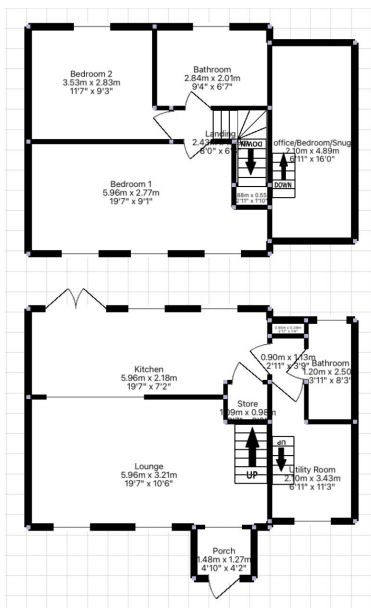
🛏️ 2 🚿 2 🚗 1



- Charming, link-detached 2-bedroom, COASTAL character cottage
- Stunning renovation and finishes throughout
- Open plan lounge/kitchen/diner
- Resin bound driveway parking for two-three cars
- Highly Sought-After Location
- 4-minute drive to Holywell Bay Beach
- Versatile office/snug
- Enclosed courtyard garden
- Central village location
- Desirable investment opportunity



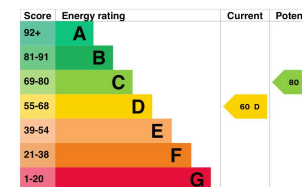
Charming, link-detached 2/3 bedroom, COASTAL character cottage. 4-minute drive (1.4 miles) to Holywell Bay Beach! Stunning renovation and finishes throughout. Rural outlook with countryside views. Enclosed courtyard garden. Off road parking for two-three cars on it's resin bound driveway! Highly Sought-After Location, Desirable investment opportunity. Welcome to this beautifully renovated 2-bedroom semi-detached cottage in the idyllic village of Cubert, just a 4-minute drive from the picturesque Holywell Bay Beach. This stunning home has been thoughtfully renovated throughout, boasting light, airy interiors and meticulous attention to detail.



Energy rating and score

This property's energy rating is D. It has the potential to be C.

[See how to improve this property's energy efficiency.](#)



The graph shows this property's current and potential energy rating.

Properties get a rating from A (best) to G (worst) and a score. The better the rating and score, the lower your energy bills are likely to be.

For properties in England and Wales:

- the average energy rating is D
- the average energy score is 60

01872 571 119
info@athomecornwall.co.uk

athomecornwall.co.uk

At Home Cornwall Ltd Company Reg: 12746530

Agents Note: Whilst every care has been taken to prepare these sales particulars, they are for guidance purposes only. All measurements are approximate are for general guidance purposes only and whilst every care has been taken to ensure their accuracy, they should not be relied upon and potential buyers are advised to recheck the measurements